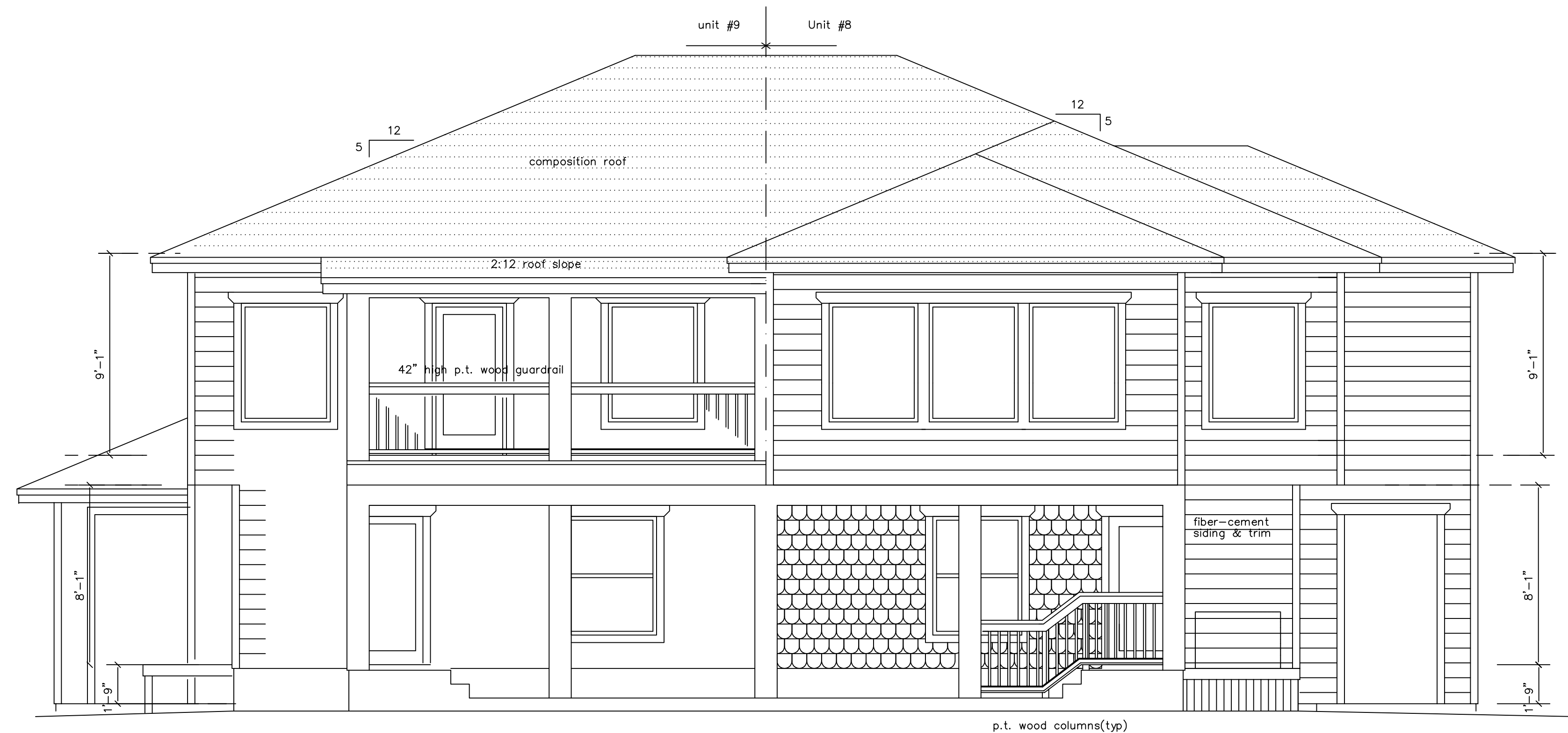
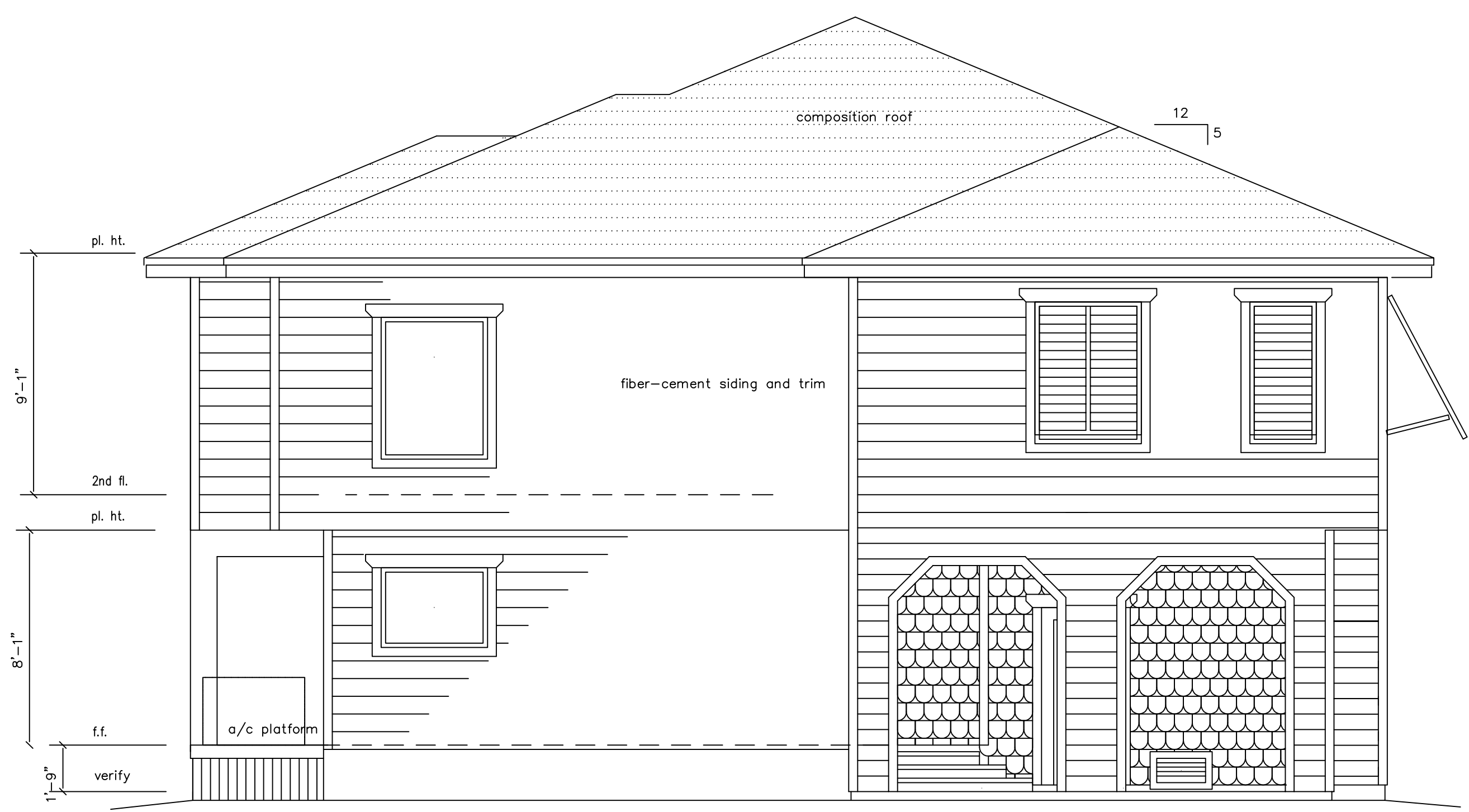




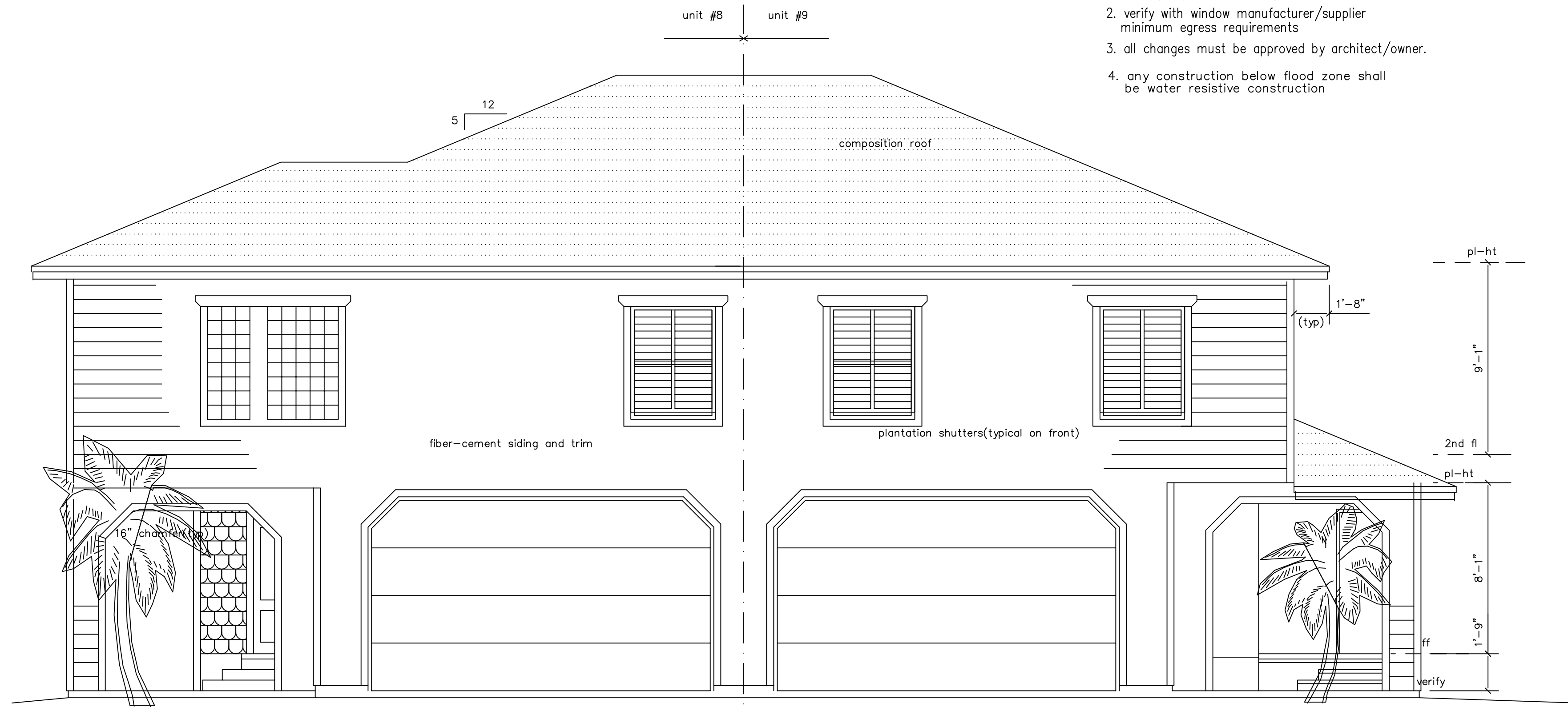
right elevation 1/4"=1'-0"



rear elevation 1/4"=1'-0"



left elevation 1/4"=1'-0"



front elevation 1/4"=1'-0"

general notes:

1. slope all exterior horizontal surfaces for proper drainage. (i.e. window ledges, parapets, plinth blocks)
2. verify with window manufacturer/supplier minimum egress requirements
3. all changes must be approved by architect/owner.
4. any construction below flood zone shall be water resistive construction